

Technical guide

(tutorial for accessing the application)

Each participant will be provided from the organizers/ team leaders with the following information to connect to the application. The application is hosted inside a virtual machine at the address given below.

Step 1. Connect to the virtual machine host

- Use the IP address: <https://217.156.104.111:8006> or <https://217.156.104.112:8006>
- Username: (Example: BIH5_student)
- Password: xxxxxxxxxx
- a warning window will open (Warning: Potential Security Risk Ahead): Click **Advanced...** (the browser complains about missing the domain name on the URL). The page will extend, so scroll down and press the button **Accept the risk and Continue**
- the login window below will open:

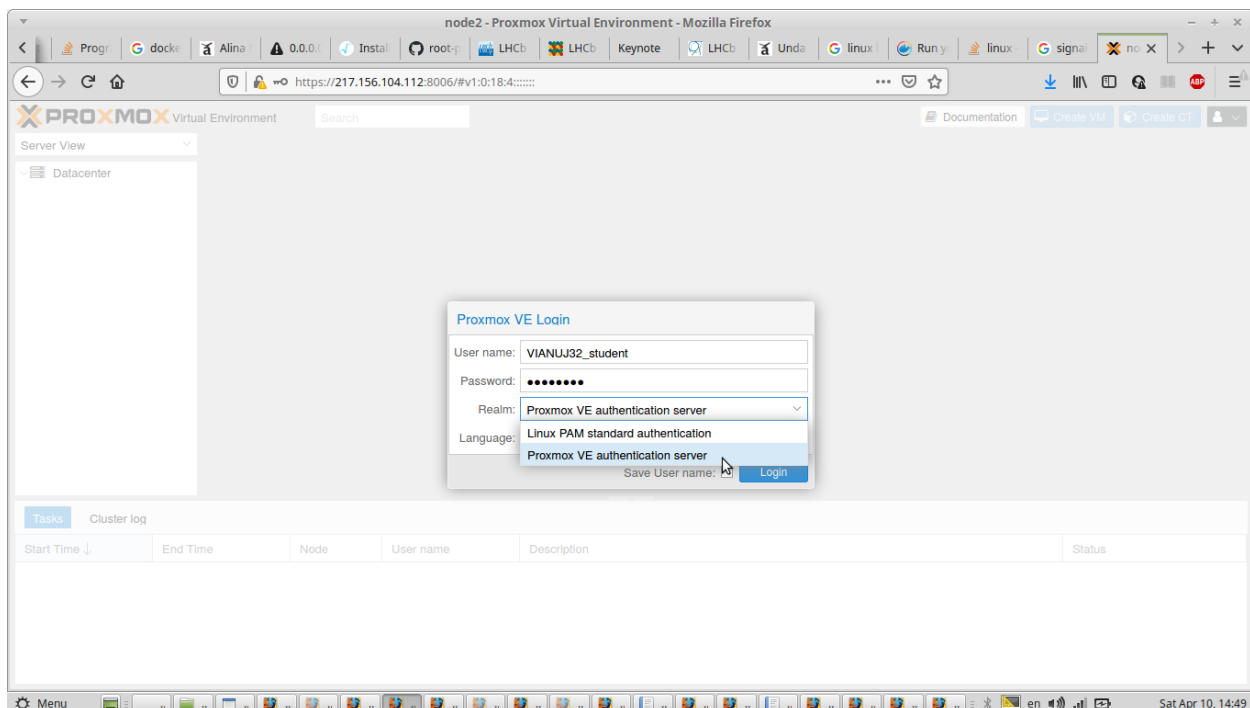


Fig. 1

- insert the username and password given
- at Realm: choose the **Proxmox VE authentication server**

- click **Login**
- over the next window, a new warning will appear (**No valid subscription**). Press **OK**

Step 2. Open the virtual machine hosting the application

- From the interface, in the upper left corner select 'Pool view' to see the virtual machine allocated to you/ select **Datacenter** select your dedicated machine (having your contest code) and open it.

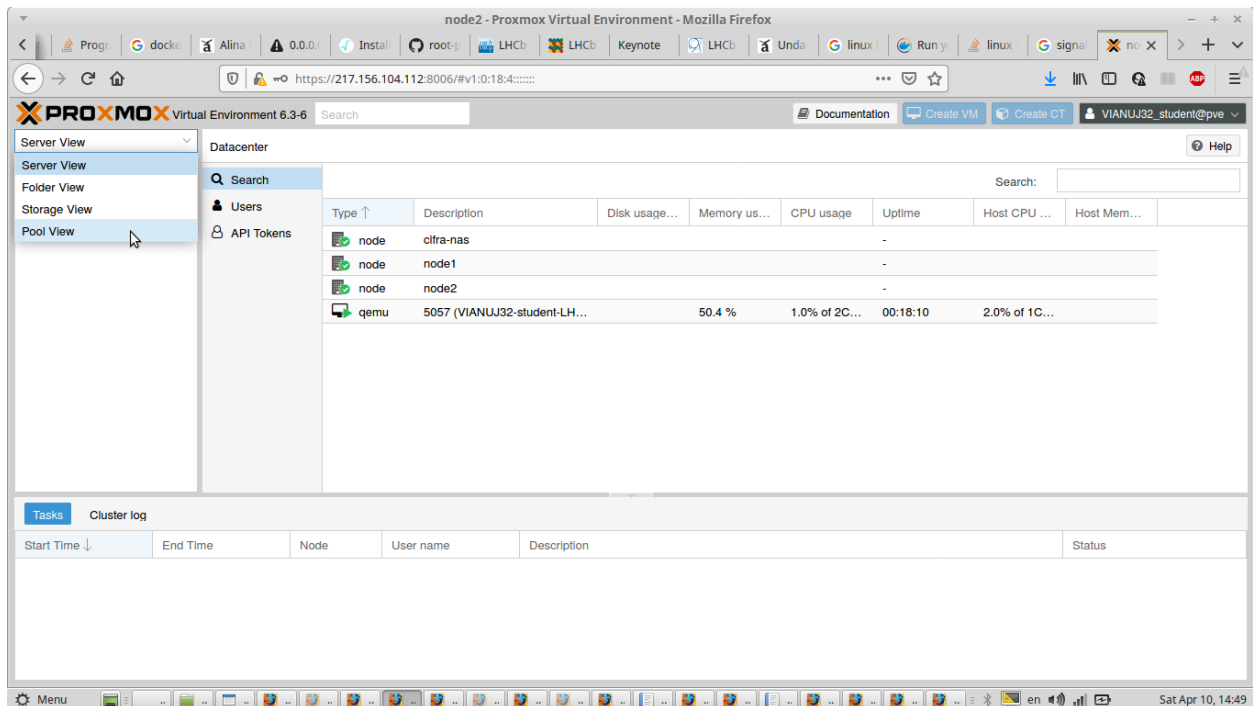


Fig. 2. Select the 'Pool view' to see the machine dedicated to you.

- Double click on your machine and you should see the screen from Figure 3.
- press on **fullscreen** button as shown above

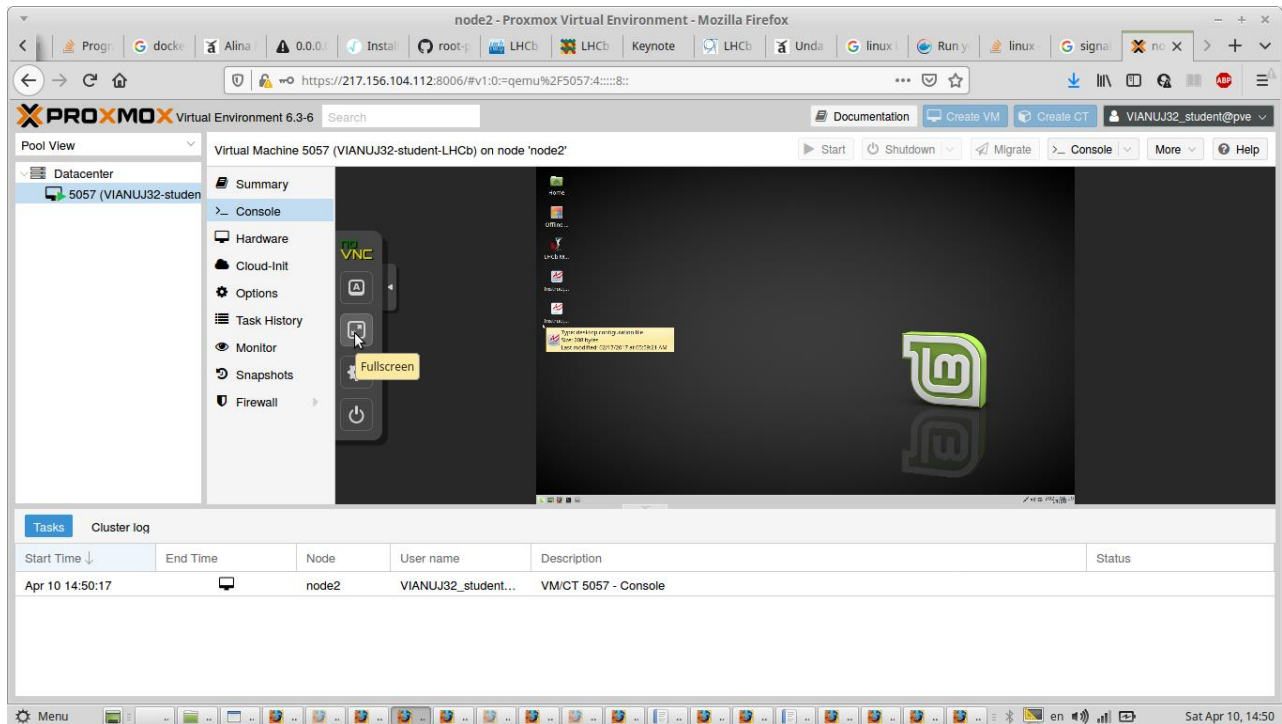


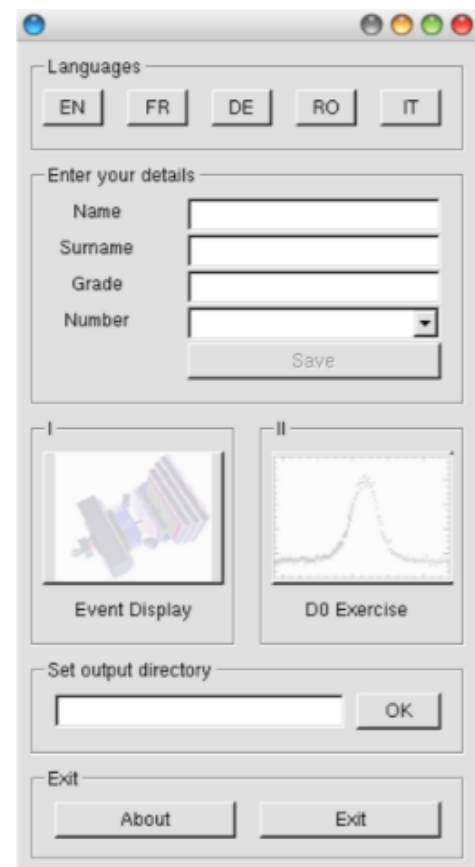
Fig. 3

Step 3. Feedback

To know that you arrived at the proper place, please access the Google Form from your computer (not in the virtual machine) at the address: <https://forms.gle/hrAPzCfv7XE2NcgH8> answer the two questions and press the **send** button.

Step 4. Start the application

- to start the application, double click on the **LHC Master** link. The interface shown to the right will open
- choose the language
- write your name and surname (any character, it is not recorded)
- Grade? (any character, it is not recorded)
- Number: please introduce the given number
- In the **Set output directory** do not do anything
- To solve exercise 1 you will have to push **Event Display**
- To solve exercises 2, 3 you will have to push **D0 Exercise**



Notes:

- You can run in parallel more than one instance of the application
- The final saving of your plots, tables, notes will be done outside the applications.
- If during the contest you lose the internet connections you will lose the plots from inside the application, but you will still have the ones saved on your computer.